



AltaPLENTIFUL

011HO11225

DE-SU ALTAPLENTIFUL-ET

AltaIOTA X PLANET X SHOTTLE

HOUSAM000069990335 | DOB 7/8/2011

Kappa-Casein AA | Beta-Casein A2A2 | β -Lac BB

Haplotypes HH1F HH2F HH3F HH4F HH5F HCDF

Genetic Codes TD TL TP TR TV TY

aAa 315 | DMS 135,345 | EFI 9.2 %

Current Proof USA-201712

CDCB & HA-USA Genetic Evaluations 12/2017

CONFORMATION Based on 175 Daughters in 64 Herds (95% Rel)					
PTAT					+1.11
UDC					+1.19
FLC					-0.22
	-2	-1	0	1	2
Stature					+0.87 Tall
Strength					+1.20 Strong
Body Depth					+1.45 Deep
Dairy form					+1.95 Open
Rump Angle					+0.67 Sloped
Thurl Width					+0.89 Wide
R. Legs-S View					+0.69 Sickie
R. Legs-R View					+0.07 Straight
Foot Angle					-0.59 Low
F&L Score					-0.01 Low
F. Udder Att.					+0.07 Strong
R. Udder Ht.					+3.04 High
R. Udder Wid.					+2.80 Wide
Udder Cleft					+0.66 Strong
Udder Depth					-0.73 Deep
F. Teat Place					+1.31 Close
R. Teat Place					+1.35 Close
Teat Length					-0.33 Short

Pedigree	
SIRE	REGANCREST ALTAIOTA-ET
DAM	DE-SU 8947-ET
MGS	ENSENADA TABOO PLANET-ET
MGD	DE-SU 7012-ET
MGGS	PICSTON SHOTTLE-ET
MGGD	DE-SU OMAN 6125-ET

TPI	2238	NM\$	496
-----	------	------	-----

PRODUCTION		
Milk	+1783 Lbs	98% Rel
Protein	+56 Lbs	+0.01%
Fat	+86 Lbs	+0.07%
Cheese Merit	+\$498	

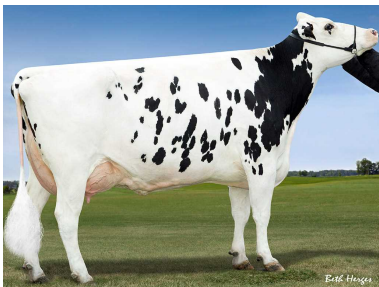
Based on 827 Daughters in 125 Herds (93% US Daughters)		
Milk Production - US daughters	+30421 Lbs	93%
Fat Yield - US daughters	+1197 Lbs	3.9%
Protein Yield - US daughters	+951 Lbs	3.1%

HEALTH TRAITS			
Productive Life	-0.3	Daughter Pregnancy Rate	-2.2
Livability	-2.0	Cow Conception Rate	-1.5
Somatic Cell Score	+3.09	Heifer Conception Rate	-0.2
Mastitis		Metritis	
Ketosis		Displaced Abomasum	
Retained Placenta		Milk Fever	

CALVING TRAITS				
Sire Calving Ease	7.7%	98% Rel	2646	Observ
Dtr Calving Ease	6.8%	93% Rel	1091	Observ 877dtr.
Sire stillbirth	6.8%	95% Rel	2665	Observ
Daughter stillbirth	5.6%	92% Rel	722	Observ 531dtr.



LBD Plentiful 18141
Lake Breeze Dairy, Malone, WI



MGD: De-Su 7012-ET EX-92