



AltaARN

011HO11463

T-SPRUCE ALTAARN-ET

NUMERO UNO X BOOKEM X MEGA-MAN

HOUSAM000072395572 | DOB 3/31/2013

aAa 324 | DMS 234,123 | EFI 9.3 %

Kappa-Casein: AE Beta-Casein: A1A2

Current Proof: USA-201712

CDCB & HA-USA Genetic Evaluations 12/2017

TPI	2411	NMS	590
-----	------	-----	-----

CONFORMATION Based on 20 Daughters in 7 Herds (85% Rel)					
PTAT					+1.59
UDC					+1.42
FLC					+0.77
	-2	-1	0	1	2
Stature					+1.57 Tall
Strength					+0.68 Strong
Body Depth					+0.66 Deep
Dairy form					+0.84 Open
Rump Angle					-0.10 High Pins
Thurl Width					+1.57 Wide
R. Legs-S View					+0.69 Sickie
R. Legs-R View					+0.25 Straight
Foot Angle					+1.20 Steep
F&L Score					+1.20 High
F. Udder Att.					+1.76 Strong
R. Udder Ht.					+1.94 High
R. Udder Wid.					+1.78 Wide
Udder Cleft					+1.62 Strong
Udder Depth					+1.71 Shallow
F. Teat Place					+0.52 Close
R. Teat Place					+0.67 Close
Teat Length					+0.50 Long

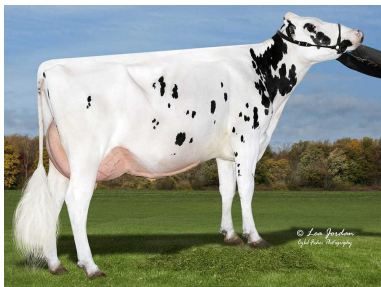
PRODUCTION		
Milk	+573 Lbs	94% Rel
Protein	+29 Lbs	+0.04%
Fat	+44 Lbs	+0.08%
Cheese Merit	+\$617	

Based on 204 Daughters in 64 Herds (67% US Daughters)		
Milk Production - US daughters	+28225 Lbs	67%
Fat Yield - US daughters	+1105 Lbs	3.9%
Protein Yield - US daughters	+878 Lbs	3.1%

HEALTH TRAITS			
Productive Life	+7.4	Daughter Pregnancy Rate	+3.7
Livability	+1.1	Cow Conception Rate	5.8
Somatic Cell Score	+2.75	Heifer Conception Rate	4.5

CALVING TRAITS				
Sire Calving Ease	7.1%	95% Rel	2203 Observ	
Dtr Calving Ease	5.5%	80% Rel	77 Observ	149 dtr.
Sire stillbirth	8.0%	89% Rel	2150 Observ	
Daughter stillbirth	5.8%	79% Rel	72 Observ	144 dtr.

Pedigree	
SIRE	AMIGHETTI NUMERO UNO ET
DAM	MISS BOOKEM MARLY-ET
MGS	DE-SU 521 BOOKEM-ET
MGD	SAINTVILLE MEGAMAN MALLORY
MGGS	MR MILLION MEGA-MAN TV TL BY
MGGD	SAINTVILLE SHOTTLE MASIE



Cottonwood Arn 991
Cottonwood Dairy; South Wayne, WI